



ST. ANDREW'S COLLEGE
Cambridge



PROSPECTUS

2025 / 26



Welcome to St Andrew's College Cambridge



Wayne Marshall, Principal
MBA, PGCE

50 years of excellence
in the heart of Cambridge

Welcome to St Andrew's College, Cambridge — an international college set in the heart of the world's most renowned academic city. Our campus is within walking distance of the University of Cambridge, the Botanic Gardens, and world-class museums. Cambridge is a safe, walkable, historic city that has inspired generations of leaders, thinkers, and innovators.



At St Andrew's, students receive not just an education, but a truly Cambridge experience — academically rigorous, globally relevant, and personally enriching.

Annette Poulain, Head
MBA, PGCE



Why St Andrew's?

Founded in 1976, St Andrew's College Cambridge is the oldest tutorial college in the city and a proud member of the BBSN. We are accredited by OFSTED and the Independent Schools Association (ISA). As a specialist boarding school for students aged 15–21, we offer an academically rigorous and highly personalised education in the heart of central Cambridge. The College is also an official examination centre for GCSEs, A-Levels, EPQ, and British Olympiad assessments.

- Offers Pre-A, Pre-IB, 1-Year GCSE, A-Level, and University Foundation courses.
- Flexible one-term academic programme available with September, January, or April intakes.
- Small class sizes (approx. 8 students per class) for personalised academic support.
- En-suite boarding accommodation (single/twin) and homestay options for students aged 16+.
- Access to University of Cambridge libraries, sports centre, public lectures, and laboratories.
- Daily academic mentoring and university preparation with Cambridge University PhD student tutors.
- Visits to leading Cambridge cultural sites including the Fitzwilliam Museum, Zoology Museum, and Botanical Garden.
- Over 30 extracurricular clubs and monthly school trips to enrich the student experience.
- Merit-based scholarships available — up to 35% tuition reduction.
- Part of Dukes Education, offering enhanced university preparation via Dukes Plus:
- The Medic Portal (Medical school preparation)
- The Lawyer Portal (Law school preparation)
- Oxbridge Applications (Oxford and Cambridge preparation)
- A-List Education (Ivy League preparation)
- Over 55% of A-Level students receive offers from G5 universities (including Cambridge University).
- 100% university progression success for Foundation students — 84% placed at Russell Group universities (excl Art Foundation students).
- True integration with the Cambridge academic ecosystem — lectures, labs, and academic immersion.



Our Course offer



Pre-A	September & January intakes	1 Year or 2 Terms
Pre-IB	September & January intakes	1 Year or 2 Terms
1 year GCSE	September & January intakes	1 Year or 2 Terms
A Level (Joining Year 13 is available based on individual case)	September & January intake	2 Year or 5 Terms
University Foundation	September & January intakes	1 Year or 2 Terms
1 Term / Half Term Course	September, January & April intakes	0.5 - 1 term

Students who qualify for a Child Student Visa can attend the internal assessment of a 50 minutes online test and a 30 mins Zoom interview, and will not be required to take the IELTS exam. However, students enrolling in the Foundation programme or A-Level students aged 18 or over must take the UKVI Academic IELTS as part of their visa application process.

Course Information

Course length: 1 year (3 terms)

Age: Minimum 15 years

Term Dates: September Intake

Requirement: IELTS 4.0 or Equivalent

Course length: (2 terms)

Age: Minimum 15.5 years

Term Dates: January Intake

Requirement: IELTS 4.5 or Equivalent

Pre A-Level

Pre A-Level Pathway Options (NCFE)

All students take the following compulsory subjects:

- English (12 hours a week)
- Mathematics (4 hours a week)

Students then choose one of the following specialised pathways (4 hours a week):

Scientific Pathway:

- Biology, Chemistry, Physics

Humanities Pathway:

- Geography, Latin, Business

Creative Pathway:

- Art and Design, Photography, Music

Business Pathway:

- Latin, Business, Economics

Computing Pathway:

- Computer Science, Physics, Economics

Sporting Pathway:

- Physical Education, Biology, Geography



Course Information

Age: 15-17 years old

Course structure: 6 subject areas plus Core Elements

1-Term Taster Course Intakes: September, January, April

Entry Requirement: IELTS 4.5 or equivalent

Pre IB

Pre-IB Pathway (NCFE)

All subjects are compulsory

- English Language & World Literature
- Mathematics
- Theory of Knowledge

Sciences:

- Biology, Chemistry, Physics, Environmental Sciences

Humanities:

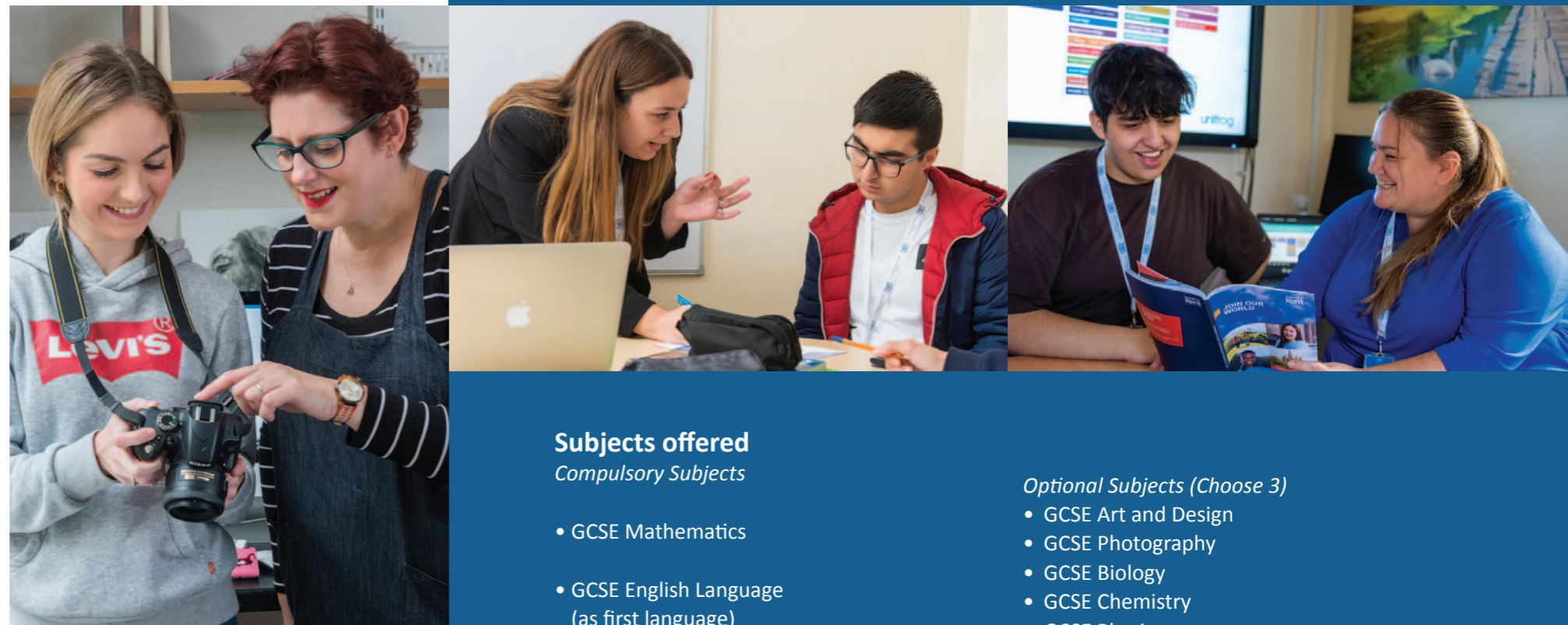
- Economics, Business, History, Geography

Modern Foreign Languages:

- French, German, Mandarin Chinese, Italian

The Arts:

- Fine Art, Photography, Music, Physical Education



One Year GCSE

Course Information

Course length: One year (3 terms for September entry / 2 terms for January entry)

Age: Minimum 15 years

Start Dates: September or January

English Requirement: IELTS 5.0 or equivalent

Subjects: Study five subjects including English and Maths

Subjects offered

Compulsory Subjects

- GCSE Mathematics
- GCSE English Language (as first language)

Optional Subjects (Choose 3)

- GCSE Art and Design
- GCSE Photography
- GCSE Biology
- GCSE Chemistry
- GCSE Physics
- GCSE Business
- GCSE Economics
- GCSE Computer Science
- GCSE Geography
- Level 1 Certificate in Latin
- GCSE Physical Education
- Level 1 Certificate in Music
- Native Language GCSE – if available

A-Level

Course Information – A-Level Pathways

18-Month Course

Start Date: January intake

Age: Minimum 16

Duration: 18 Months (5 terms)

English Requirement: IELTS 5.5
or equivalent

2-Year Course

Start Date: September intake

Age: Minimum 15.5

Duration: 2 years (6 terms)

English Requirement: IELTS 5.0
or equivalent

2.5-Year Course

Start Date: January intake

Age: Minimum 15

Duration: 2.5 years (8 terms)

English Requirement: IELTS 4.5
or equivalent

3-Year Course

Start Date: September intake

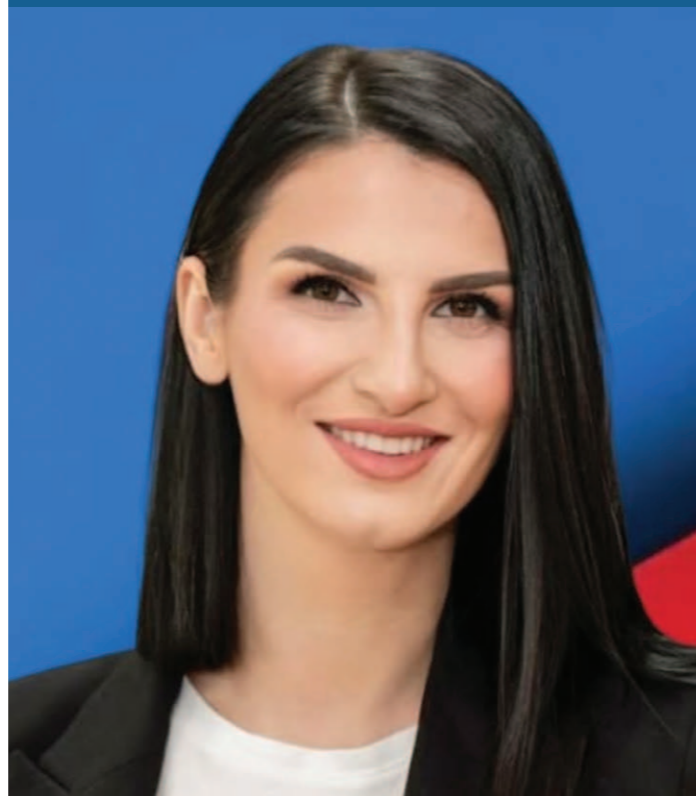
Age: Minimum 15

Duration: 3 years (9 terms)

English Requirement: IELTS 4.0
or equivalent



Carolina, A*A*A, Brazilian,
Imperial College London, Physics



Ilva, A*A*A, Albanian,
Cambridge University, Architecture

A-Level Subject Options

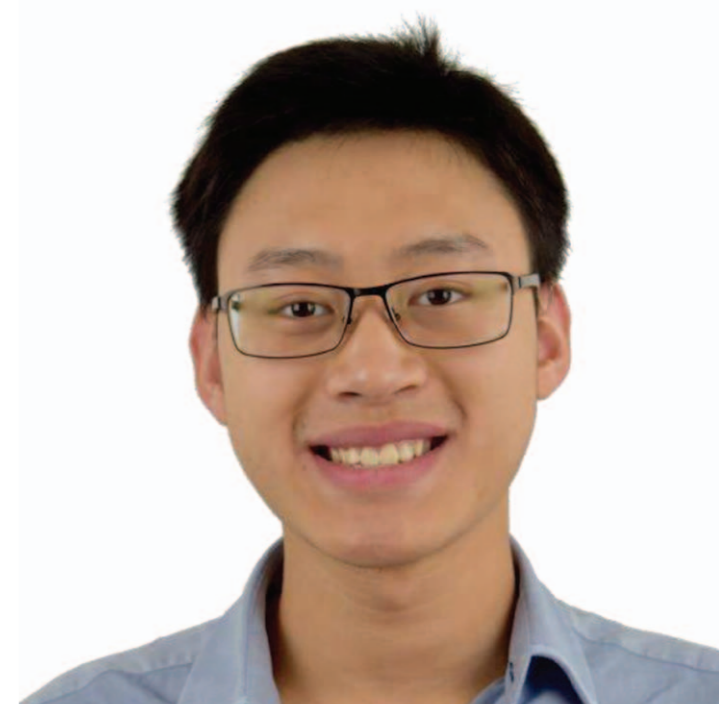
*(All examined by UK exam boards:
AQA, Edexcel, OCR)*

- Biology (AQA)
- Chemistry (AQA)
- Physics (AQA)
- Business (AQA)
- Economics (AQA)
- Computer Science (AQA)
- Psychology (AQA)
- Sociology (AQA)
- History (AQA)
- English Literature (AQA)
- Geography (Edexcel)
- Mathematics (Edexcel)
- Further Mathematics (Edexcel)
- Art and Design (OCR)
- Digital Photography (OCR)

Additional Language A-Levels

- Russian
- Turkish
- French
- Italian
- Spanish
- Chinese
- Arabic

(All examined by Edexcel)



Jeremy, A*A*A, Malaysian,
University of Leicester, Medicine



Kanstantsin, A*A*A, Belarusian,
LSE, Economics

Success Stories

Ben, A*A*A, British, Imperial College London,
Physics with Theoretical Physics

Success Stories

Jason, A*A*A, Indonesian,
University of Edinburgh, Economics

Course Information

University Foundation RQF Level 3

6 -Month Course (January Start)

Age: 17 minimum
English Requirement: UKVI Academic IELTS 5.5

1-Year Course (September Start)

Age: 16.5 minimum
English Requirement: UKVI Academic IELTS 5.0

18-Month Course (January Start)

Age: 16 minimum
English Requirement: UKVI Academic IELTS 4.5

2-Year Course (September Start)

Age: 15.5 minimum
English Requirement: UKVI Academic IELTS 4.0

University Foundation

Foundation Pathways Offered

- Business
- Economics
- Humanities
- International Relations
- Computer Science & AI
- Engineering
- Law
- Art & Design
- Architecture
- Science
- Medical & Life Science
- Psychology

Average class size of 7	
100% to university	
71% excl Art Foundation to Russell Group	
Humanities Foundation:	76% to Russell Group
Science Foundation:	75% to Russell Group
Computer Science and AI	84% to Russell Group
Engineering Foundation:	100% to Russell Group
Art Foundation:	80% to Russell Group including UAL

Success Stories

Zeynep (Turkey) – Completed the IB with 20 points in Turkey, joined St Andrews College Cambridge Business Foundation, and progressed to King’s College London for Business Management.

Comparing St Andrews College with University Foundation Programmes

Feature	St Andrews College	Typical University Foundation
Class Size	8 students on average	Around 25 students
Teaching Hours	40% more teaching hours	Standard hours
Personal Tutoring	Daily one-to-one sessions	Limited or none
Flexibility	GCSE, A-Level, EPQ, local language A-Levels	Rarely offered
Access to Cambridge Facilities	Yes: Library, Sports Centre, Public Lectures	Not available
PhD Research Programme	Yes: Daily after-school opportunities	Not available
Retake Opportunities	Yes: Retake in July if firm offers are missed	Rarely offered
Pastoral Care	Full support with dedicated house parents	Not available



Success Stories

Jimmy, who got BCD in A-Levels, switched to Engineering Foundation, and progressed to Edinburgh University to study Electronic Engineering.

One Term Course

**Semester at a British Boarding School in Cambridge, UK
(September, January & April Intakes)**

Prime Location in Cambridge

Centrally located, surrounded by the historic colleges of the University of Cambridge.

Top-Quality Faculty

Highly experienced teachers, many of whom have studied or taught at Oxford or Cambridge.

Diverse & Welcoming Environment

A truly international student body with over 30 nationalities represented each year.



Flexible Course Options

Academic programmes available from 1 to 3 terms including:

- Pre-A-Levels
- Pre-IB
- GCSE
- A-Levels
- University Foundation (if joining in January for 2 terms, students can gain a University Foundation RQF Level 3)

Small Class Sizes

Average of 8 students per class to ensure individual attention and tailored support.

Dedicated Personal Tutor

Each student is assigned a personal tutor for daily academic guidance and wellbeing check-ins.

Family-Style Boarding

Supervised residential accommodation with 24/7 support, full-board meals, and weekly laundry included.

Enriching Extracurricular Life

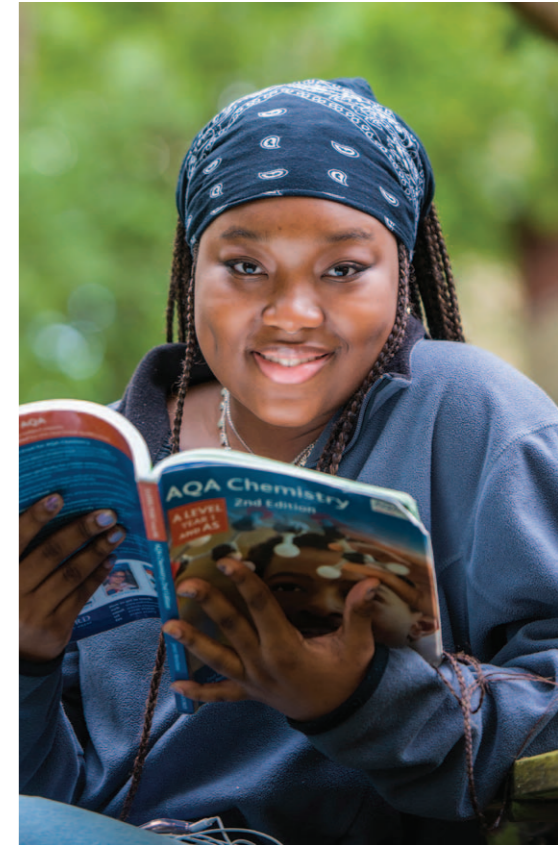
A wide range of clubs, sports, music, art, and societies — plus visits to museums, social events, and university open days.

Access to Cambridge University

Attend public lectures and use university sports facilities — an authentic Cambridge experience.

UK Cultural Excursions

Explore iconic cities like London and Oxford, and other cultural landmarks across the UK.



University Preparation

St Andrew's has excellent connections with university admissions departments and offers tailored advice and support for every student through individual and group university preparation sessions.

Introduction to UCAS

- What is UCAS?
- How to carry out degree searches using the website?
- Understanding UCAS deadlines (including Oxbridge)

Choosing your Course & University

- Introduction to UK universities and their geography
- Attending open days
- Attending the St Andrew's university fair
- Differences in course modules at each university

The Application Process

- How to apply
- Completing a skills and qualities questionnaire to increase student awareness of their skill set and its importance for the UCAS process and beyond
- Learn key words in education and careers relating to course choices
- How to complete the application form and the importance of accuracy
- Online Application Test

Interview Training

- Learning how to speak publicly
- Becoming confident speakers
- What to say and what not to say in interviews

Personal Statement

- What is a personal statement?
- How to write about your course
- What to include and what not to include
- Writing style
- How to write your personal statement/content
- How to develop your personal statement to ensure it fits the UCAS criteria

Apply

- Completing the application process checklist
- Submitting your application
- St Andrew's will submit all required references

After Application

- How to track your application
- Further interview preparation
- Offers and rejections
- Explaining results and clearing
- Providing advice on results day

Academic Enrichment & Cambridge University Integration

Academic Enrichment & Cambridge University Integration

At St Andrew's College Cambridge, we go beyond the classroom to prepare students for success at top universities through exceptional academic enrichment, expert mentoring, and direct engagement with Cambridge University.

Dukes Plus Enrichment Programme

As part of the Dukes Education family, our students benefit from exclusive access to the Dukes Plus network, offering:

- University application support tailored to individual goals
- Career immersion experiences in medicine, law, business, and more
- Summer schools, day camps, and specialist tuition programmes
- UCAS strategy sessions, helping students navigate the UK university system with confidence

Extended Project Qualification (EPQ)

The EPQ allows students to:

- Conduct independent research on a topic of their choice
- Develop critical thinking, academic writing, and project management skills
- Enhance their university applications with a recognised qualification beyond their A-Level or Foundation curriculum

Cambridge University PhD Mentoring

Students are matched with Cambridge University PhD mentors for:

- Daily academic tutorials and personalised support
- Guidance on the EPQ, Olympiads, and university entrance assessments
- Preparation for competitive applications to G5 universities including Oxford, Cambridge, LSE, UCL, and Imperial

Cambridge University Integration

Our location in the heart of Cambridge provides unparalleled opportunities for university integration:

- Attend public lectures by Cambridge University professors
- Participate in guided science lab sessions with Cambridge faculty
- Visit Cambridge University departments, museums, and facilities
- Access the Cambridge University library and sports centre to enrich both academic and extracurricular life

Results

A-Level progression

Leavers going to Cambridge (Architecture, Natural Sciences), Oxford, UCL, Imperial, Warwick etc.

Foundation progression

100% university placement, 87% to top 20 UK institutions



We offer a portfolio of extra-curricular activities to suit a wide spectrum of interests.

Students can choose various sports, attend a wide variety of clubs and societies and enjoy social events.

We encourage our students to take part in these activities and/or clubs to:

- Develop self-confidence
- Improve organisation
- Develop team working and leadership skills
- Make them more attractive to universities (well-rounded individuals with hobbies and interests that differ from their academic discipline)
- Give them the opportunity to mix with other students with similar interests and have fun
- Develop new skills which can be useful for their personal statement and to discuss at university interview



Extra Curricular

Clubs and Societies

- STEM
- Student Council
- Computer Programming Club
- Art Club
- Music Club
- Debate Society
- Creative Club
- Chess Club
- Young Enterprise
- Sustainability & Environmental Society
- Dance Club
- Media Effects Makeup Club
- Medics Society

Sports

- Football
- Basketball
- Badminton
- Volleyball
- Squash
- Cricket
- Table Tennis
- Golf
- Indoor Climbing
- Touch Rugby

Competitions

- Termly creative writing competition
- Termly photography competitions
- Student Commendations
- Senior Maths Challenge
- Talent Competition

Social Activities

- Summer Ball
- Graduation Ceremony
- Day Trips, Study Trips and Sports Events
- University Open Days
- Museum and Gallery Visits
- Punting
- Climb St Mary's Church Tower
- Cambridge University Lectures
- Festivals and Plays
- Join one of the many gyms
- Indoor & Outdoor Swimming
- Film Night
- Astronomy Night
- Traditional Afternoon Tea
- River Walk and Picnic
- Games Night

Student Life at St Andrew's College Cambridge

At St Andrew's College Cambridge, we provide a warm, safe, and engaging environment where students thrive both academically and personally.

Boarding & Accommodation

- 11 modern boarding houses, each supervised by dedicated house parents
- A choice of single or twin en-suite rooms, fully catered with daily meals
- Homestay option available for students aged 16+, offering an immersive cultural experience with local families

Daily School Schedule

- Lessons run Monday to Thursday: 09:00 – 16:00, and Fridays: 09:00 – 14:00
- Lunch break is from 12:00-13:00 and dinner time is from 17:00-19:00

Activities & Enrichment

- A wide range of extracurriculars: archery, climate club, Cambridge Half Marathon participation, day trips to London, Oxford, and more

Monthly trips and over 30 club activities available throughout the year

Outstanding Pastoral Care

- Rated Outstanding for student welfare
- Weekly one-to-one tutorials, safeguarding support, and round-the-clock supervision
- A welcoming and diverse international student community

Student Life



The admissions process is as follows:

Fill out the registration form online
<https://www.standrewscambridge.co.uk/apply-online/>



Send your latest school report, passport and birth certificate to
registrations@standrewscambridge.co.uk (We will then invoice you for the registration fee)



Take your 50-minute online entrance exams, which encompasses both Maths & English



Foundation students will need an IELTS certificate (must be Academic UKVI)



Online interview with Admissions Manager, Deputy Head (Academic) or Principal



The application is reviewed and you will be made an offer. To accept the offer, please fill in and return the acceptance and parental consent forms and pay the deposit within one week.



Minimum of first terms fees payable and upon receipt a CAS request is sent to the Dukes Visa team for issuance (can opt for full year payment)



Dukes immigration department will in contact to gain any additional documentation



Confirmation of Acceptance of Studies (CAS) is generated



Visa application must be done by the family (visa team does not coordinate visa applications)



Pre-arrival paper work including medical, guardianship (students under 18) and travel forms are sent out from June.

Admissions

Scholarships

We offer merit-based scholarships on tuition fees at the following levels:

- 10% Scholarship
- 20% Scholarship
- 35% Scholarship – *available exclusively for GCSE and A-Level students*
- Homestay with a local family £220 per week (41 weeks annually)

Scholarship awards are based on academic performance, interview, and supporting documents.

Contact:
13 Station Road,
Cambridge CB1 2JB
+44 1223 903048

Fees

Course Tuition (3 terms in one year)

Courses	Fees per Term
One Year GCSE, Pre A-Level, Pre IB and University Foundation Courses	£10950
A-Levels	£13200
Additional English (for students with IELTS 5.0 or 5.5)	£1200
Individual Tuition	£95 per hour

Residential Accommodation (3 terms in one year)

Accommodation	Fees per Term
All accommodation is full-board (breakfast, lunch and dinner 7 days a week are included in the fees below)	
Superior Single Room En-suite	£9315
Superior Twin Room En-suite	£8075
Single Room En-suite	£8075
Single Room with shared Shower / Twin Room E-suite	£7450
Homestay with Independent Provider(41 weeks annually)	£220 per week

St Andrew’s College Cambridge is not responsible for charging/managing homestay fees and does not oversee homestays directly. However, we are happy to assist families with the booking process through an external party, Cambridge Homestay Centre, with all payments made directly to the homestay provider.



Where Our A-Levels Students Have Progressed

GRADE	UNIVERSITY	COURSE
A*A*A*A*A*	University College London	Engineering (Mechanical)
A*A*A*A*	University of Glasgow	Physics
A*A*A*A	University College London	Economics
A*A*A*	University of Leicester	Medicine
A*A*A*	University of Leeds	Zoology
A*A*A*	University College London	Comparative Literature
A*A*A*B	University College London	Ancient History
A*A*AA	Durham University	Mathematics
A*A*AA	Imperial College London	Physics with Theoretical Physics
A*A*AA	University of Leeds	Mathematics (Pure Mathematics)
A*A*AB	University College London	Mathematics and Statistical Science
A*A*A	University College London	Chemical Engineering
A*A*A	University College London	Psychology with Education
A*A*A	University of Birmingham	Civil Engineering
A*A*A	University of Toronto	Finance and Accounting
A*A*A	King’s College London	Economics
A*A*A	Cardiff University	Media and Communications
A*A*A	University College London	Engineering (Mechanical)
A*A*A	University College London	Computer Science
A*A*A	Imperial College London	Physics with Theoretical Physics
A*A*AB	University of Leeds	Film, Photography and Media
A*A*AA	University College London	Biochemistry
A*A*B	Loughborough University	Communication and Media
A*A*B	City, University of London	Law
A*AAA	University of Warwick	Mathematics, Operational Research, Statistics and Economics (MORSE)
A*AAA	University of Edinburgh	AI and Computer Science
A*AA	University College London	Physics
A*AA	University College London	Pharmacology
A*AA	Imperial College London	Biological Sciences
A*AA	City, University of London	Banking and International Finance
A*AA	University of Durham	Chemistry
A*AA	University of Bristol	Mathematics and Computer Science
A*AA	University of Surrey	Electronic Engineering
A*AA	University of Bath	Computer Science
A*ABB	University of Manchester	Marketing Management
A*ABB	The University of Edinburgh	Civil Engineering
A*AB	University of York	Mathematics and Finance

Where Our A-Levels Students Have Progressed

GRADE	UNIVERSITY	COURSE
A*AB	University of Leeds	Actuarial Mathematics
A*AB	University of Warwick	Maths and Physics
A*AC	University of Birmingham	Civil Engineering
A*BB	University of Sheffield	Electrical Engineering
A*AC	University of Edinburgh	Finance and Economics
A*AC	University of Liverpool	Mathematics and Statiscitics
A*BC	University of York	Business and Management
A*CC	University of Illinois	Software Engineering
AAAA	University of Manchester	Fashion Marketing
AAA	London School of Economics (LSE)	Statistics with Finance
AAAB	London School of Economics (LSE)	Management
AAA	University of Leicester	Contemporary History
AABB	Lancaster University	Computer Science
AAB	University of Leeds	Philospohy, Politics and Economics
AAB	The University of Edinburgh	Physics
AAB	Royal Birmingham Conservatoire	Music Technology (Bachelor of Music with Honours)
AAB	University of Southampton	Accounting and Finance
AAB	University of Essex	Economics
AAC	Queen Mary, University of London	Mathematics
ABC	Loughborough University	Computer Sciences and AI
ACC	University of Melbourne, Australia	Commerce
BBBC	University of Warwick	Education



Where Our University Foundation Students Have Progressed

GRADE	UNIVERSITY	COURSE
Distinction with Honours	University of Bath	Education with Psychology with professional placement
Distinction with Honours	University of Manchester	Business Management (Innovation, Strategy and Entrepreneurship)
Distinction with Honours	University of Nottingham	Economics
Distinction with Honours	University of Leeds	Computer Science
Distinction with Honours	University of Sheffield	Aerospace Engineering with an Industrial Placement Year
Distinction with Honours	University of Bristol	Business
Distinction with Honours	King’s College London, University of London	Biochemistry
Distinction with Honours	University of Sheffield	Management
Distinction with Honours	King’s College London, University of London	Biomedical
Distinction with Honours	Lancaster University	Architecture
Distinction with Honours	University of the Arts - London (UAL)	Fine Art and Sculpture
Distinction with Honours	Glasgow School of Art	Fine Art - Painting/Printmaking
Distinction with Honours	University of the Arts - London (UAL)	Fine Art
Distinction with Honours	Aston University	Marketing
Distinction with Honours	University of Southampton	Electrical Engineering
Distinction with Honours	University of the Arts - London (UAL)	Illustration
Distinction with Honours	University of the Arts - London (UAL)	Fashion
Distinction with Honours	University of York	Business and Management
Distinction with Honours	University of Manchester	Modern Language and Business and Management (Japanese)
Distinction with Honours	University of York	Economics and Finance
Distinction with Honours	Newcastle University	Architecture
Distinction with Honours	Durham University	Biological Sciences
Distinction with Honours	Newcastle University	Architecture
Distinction with Honours	University of the Arts - London (UAL)	Fine Art Sculpture
Distinction with Honours	University of the Arts - London (UAL)	Illustration and Visual Media
Distinction with Honours	Loughborough University	Fashion Design and Technology
Distinction with Honours	Kingston University	Product and Furniture Design
Distinction with Honours	Teeside University	Games Art
Distinction with Honours	Kingston University	Creative and Cultural Industries
Distinction with Honours	Bournemouth University	Computer Animation
Distinction with Honours	University of Birmingham	Chemistry
Distinction with Honours	University of Manchester	Computer Games Development
Distinction with Honours	King’s College London (KCL)	Management and Modern Languages
Distinction with Honours	Lancaster University	Computer Science

Where Our University Foundation Students Have Progressed

GRADE	UNIVERSITY	COURSE
Distinction with Honours	University of Bath	Management
Distinction with Honours	University of Leeds	Architecture
Distinction with Honours	Kingston University	Architecture
Distinction with Honours	University of the Arts - London (UAL)	Fashion Management
Distinction with Honours	Queen Mary University London	Computer Science
Distinction with Honours	Sheffield University	Mechatronics and Robotics Engineering
Distinction with Honours	King’s College London (KCL)	Digital Media and Culture
Distinction with Honours	The University of Edinburgh	Sociology and Psychology
Distinction with Honours	University of Manchester	Management (International Business Economics)
Distinction with Honours	University of Southampton	Economics and Finance
Distinction with Honours	Lancaster University	Law
Distinction with Honours	King’s College London (KCL)	Biomedical Sciences
Distinction with Honours	Studying in Canada - UQTR	Forensic Biology
Distinction	The University of Edinburgh	Fine Arts
Distinction	The University of Leeds	Civil Engineering
Distinction	University for the Creative Arts - London (UCA)	Fashion Design
Distinction	King’s College London (KCL)	Management and Modern Languages with a Year Abroad
Distinction	King’s College London (KCL)	Finance and Accounting
Distinction	Studying in Germany - Lancaster University	Computer Science
Distinction	Queen Mary University London	Electrical and Electronic Engineering
Distinction	Queen Mary University London	Financial Economics
Distinction	Queen Mary University London	Business Management
Distinction	University of Manchester	Modern Language and Business and Management (Japanese)
Distinction	Manchester Metropolitan University	Economics
Distinction	University of East Anglia UEA	Physiotherapy
Distinction	The University of Leeds	Material Science and Engineering
Distinction	Royal Holloway London	Zoology
Distinction	The University of Leeds	Chemical Engineering
Distinction	University of Essex	Law
Distinction	University of Southampton	Accounting
Distinction	Queen Mary University of London	Business with Law
Distinction	The University of Sydney (Australia)	Economics
Distinction	King’s College London, University of London	Film Studies
Distinction	University of Surrey	Business Management

Where Our University Foundation Students Have Progressed

GRADE	UNIVERSITY	COURSE
Distinction	University of the Arts - London (UAL)	Fashion Buying and Merchandising
Distinction	City University, University of London	Business Management, Digital innovation and Entrepreneurship
Distinction	University of Southampton	Business Management
Distinction	City University, University of London	Business Management
Distinction	University of Sussex	Biomedical Science
Distinction	University of Aberdeen	Sports and Exercise Science
Distinction	University of Birmingham	Mechanical Engineering
Distinction	University of Manchester	Biomedical Science
Distinction	University of the Arts - London (UAL)	Fine Art
Distinction	University of the Arts - London (UAL)	Virtual Reality
Distinction	University College London (UCL)	BA History of Art
Distinction	Newcastle University	Marketing
Distinction	City University, University of London	International Business
Distinction	University of Leicester	Accounting
Distinction	University of Leicester	Economics
Distinction	University of Leicester	Accounting
Distinction	University of Leeds	Chemical and Materials Engineering
Distinction	University of Manchester	Chemistry
Distinction	University of Art - London (UAL)	Fine Art
Distinction	Kingston University	Graphic Design
Distinction	Goldsmiths, University of London	Design
Distinction	Queen Mary, University of London	Business Management
Distinction	King’s College London (KCL)	Digital Media and Culture
Distinction	King’s College London (KCL)	International Management
Merit	University of Southampton	Financial Banking
Merit	University of Southampton	Business Management
Merit	University of Westminster, London	Business Management (Marketing)
Pass	Kingston University	Computer Science
Pass	King’s College London (KCL)	Management and Modern Languages with a Year Abroad
Pass	University of the Arts - London (UAL)	Fashion Buying and Merchandising
Pass	Concordia University (Canada)	Fine Art





The Dukes Difference

TOGETHER WE'RE EXTRAORDINARY

Members of the Dukes Education family of schools and educators are brought together by a common purpose: to give children the foundations for an extraordinary life.

By being part of a network of over 50 schools across the UK and Europe we benefit from shared expertise, innovation and good practice.

Dukes also ensures our financial stability and provides ongoing capital investment, allowing us to enhance our facilities continually and offer exceptional learning opportunities for each student.



- University Prep
- Career Experiences
- Summer Schools
- Tutoring



**Social impact
through giving**



**Nurturing leadership,
inspiring change**



**Exclusive
opportunities
for families**



**Extraordinary
experiences for our
community**



St Andrew's College Cambridge
13 Station Road
Cambridge
CB1 2JB
United Kingdom

E registrations@standrewscambridge.co.uk
T +44 (0) 1223 903048

www.standrewscambridge.co.uk