



Moments that Matter

**JAN
2026**

Enrichment Package

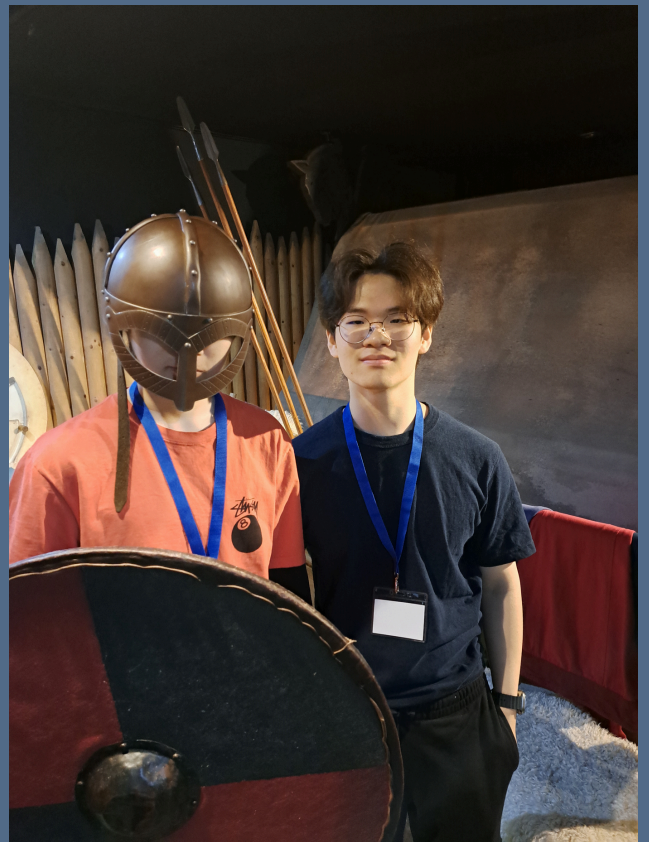


TABLE OF CONTENT

03

Introduction

04

Included in Fees

05

Pricing

07

Curriculum Trips

08

Gold Package

17

Platinum Package

21

Diamond Package

Introduction

This year, we are proud to introduce three exclusive enrichment packages—Gold, Platinum, and Diamond. Each tier offers unique and rewarding experiences. These packages are directly aligned with the prestigious Dukes Young Leaders Award, providing students with a structured pathway to achieving the corresponding award level when completed alongside the activities delivered in tutorial sessions and within the curriculum.

Learning extends far beyond the classroom. This stage of education is not only about academic achievement but also about broadening horizons, building independence, and preparing for life beyond St Andrew's College. The trips and activities in this brochure are designed to inspire curiosity, foster personal growth, and develop the skills that universities, employers, and the wider world truly value. Whether it's through cultural visits, outdoor challenges, career-focused experiences, or leadership opportunities, each activity offers a chance to learn in new environments, form lasting memories, and shape a well-rounded future.

In order for a student to attend a trip, they must be signed up for the enrichment package in which that trip is included. We cannot offer places on trips on an individual basis. Students will be able to upgrade the enrichment package they sign up for should they wish to.



Included in Fees

- Movie Night
- Games Tournament
- Rounders and picnic in the park
- Cream Tea and quiz
- Graduation Ceremony
- Lunar New Year Celebration
- Geography Field trip
- Biology Field trip
- Economics booster Exam trip
- Business booster Exam trip
- Biology booster Exam trip
- Art trip to Fitzwilliam museum
- Psychology booster Exam trip
- Creative writing trip to Fitzwilliam
- Dukes Young Leaders Award
- Dukes Careers School - INVESTIN
- University Fair
- Visit to university open day
- Cambridge University Library card
- Lectures at Cambridge University
- UnLoc Student Forum
- OxBridge Preparation
- US University Preparation
- Medics Portal
- Law Portal
- Art Exhibition
- Unifrog careers guidance
- Senior Maths Challenge
- Mathematics Olympiad
- Biology Olympiad
- Chemistry Olympiad
- Physics Olympiad
- Eid Celebration
- Weekly sessions with Cambridge PHD students



PRICING

GOLD PACKAGE

£200

- Punting
- Grafham Water
- Bowling
- Pizza Night and Mocktail making
- Escape Room
- Formal May Ball
- Cambridge University Museums tour
- Visit to Cambridge American Cemetery
- Clip and Climb experience
- Cambridge college tour

PLATINUM PACKAGE

£420

All of the Gold activities PLUS

- Harry Potter Studios
- London Theatre
- Theme Park
- Windsor Castle

DIAMOND PACKAGE

£670

All of the Gold and Platinum activities PLUS

- Residential Activity Weekend
- (minimum of 2 nights)
- Including activities such as:
- Climbing
- Raft Building
- Paddleboarding
- High Ropes
- Giant Swing
- Teambuilding

Once you have signed up for the package of your choice, you will be sent an invoice.

Curriculum Trips



As part of their studies, students will enjoy a variety of subject-specific trips—designed to bring learning to life—all fully covered within the tuition fees. Curriculum trips offer students the chance to deepen their understanding beyond the classroom, by experiencing real-world applications of their subjects. These enriching opportunities help to broaden perspectives, inspire curiosity, and bring academic learning to life in meaningful and memorable ways.

Evening Social Events



Our programme of evening social events is designed to offer students the chance to relax, connect with peers, and enjoy a positive and inclusive social life as part of their sixth form journey.

These events take place throughout the academic year and are carefully planned to provide a safe, supervised environment where students can enjoy time together outside of the classroom. The events vary in style and activity, catering to a wide range of interests.



Punting

Students will enjoy a guided punting tour along the historic River Cam. This serene and picturesque activity offers a unique view of the city's world-famous colleges and stunning architecture from the water. Led by experienced guides, the punting tour is a safe and relaxing way for students to learn about the rich history of Cambridge while enjoying the outdoors. It's an educational and memorable highlight that perfectly blends leisure with cultural discovery.



Team Building at Grafham Water



A dynamic and rewarding experience focused on developing key life skills, strengthening peer relationships, and fostering a strong sense of community.

Grafham Water Centre is a highly regarded outdoor education facility, offering a wide range of adventurous and team-based activities in a safe, supportive environment. Throughout the day, students will take part in a variety of challenges designed to build confidence, communication, leadership, and resilience.

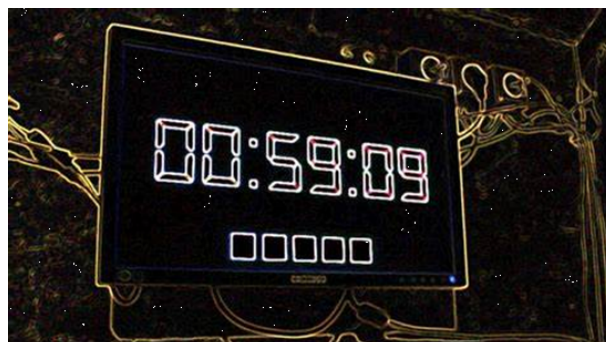


Escape Room



A unique team-based experience designed to encourage problem-solving, collaboration, and fun through mentally stimulating challenges.

Escape rooms are immersive, themed environments where teams work together to solve puzzles, crack codes, and complete challenges in order to "escape" within a set time. This event offers a perfect blend of entertainment and critical thinking, while also strengthening communication and teamwork skills.



Formal May Ball

As our sixth form students reach the end of their college journey, we mark this important milestone with a special graduation event. This celebration is designed to honour students' hard work, recognise individual and collective achievements, and provide a memorable send-off as they prepare for the next chapter of their lives. The May Ball is a glamorous evening held at a local venue, featuring a formal sit-down meal, the presentation of completion certificates, and an opportunity for students to celebrate together with music and dancing. It's a joyful and memorable way to reflect on shared experiences and mark the end of an important chapter.



Cambridge Universities Museum Tour

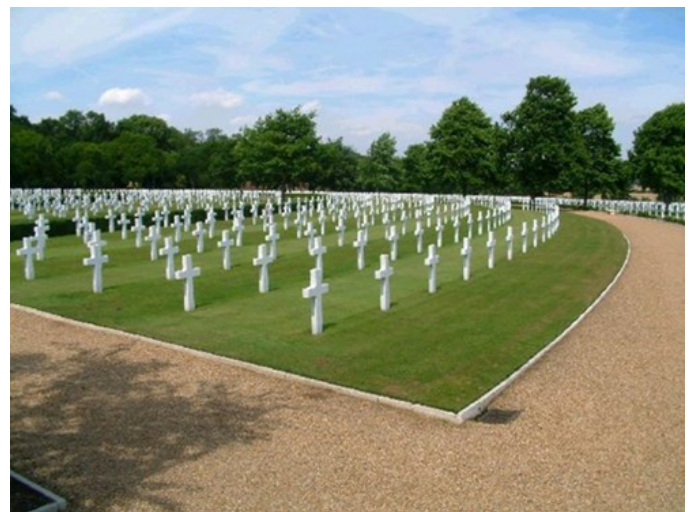


Students will visit the world-renowned Cambridge University Museums, such as the Fitzwilliam Museum, the Museum of Zoology, and the Museum of Archaeology and Anthropology. The trip is designed to spark curiosity, support cross-curricular learning as well as encouraging independent thinking and cultural engagement in a stimulating setting.



Cambridge American Cemetery

The Cambridge American Cemetery trip is a poignant and educational experience that offers a deeper understanding of World War II history and the enduring impact of global conflict. Through guided tours and interactive displays, students will explore themes of remembrance, sacrifice, and international relations. This reflective visit encourages thoughtful discussion, personal growth, and a greater appreciation of historical context, all within a respectful and carefully supervised environment.



Clip 'n' Climb



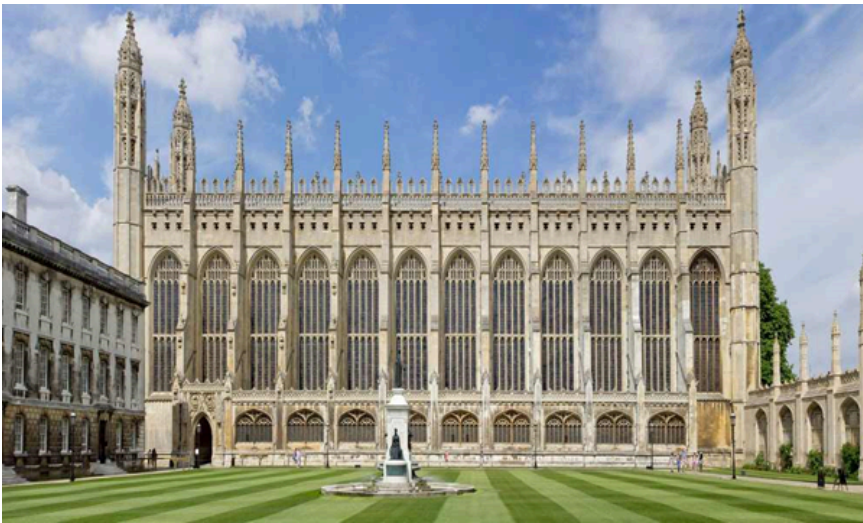
Students will take part in a fun and physically engaging trip to Clip 'n Climb Cambridge. This indoor climbing experience promotes teamwork, resilience, and personal confidence in a safe, supervised environment. With a variety of climbing challenges suitable for all abilities, the trip offers a great opportunity for students to step outside their comfort zones, support one another, and enjoy a healthy, active experience together.



Cambridge Colleges Tour



Students will have the opportunity to visit several historic colleges within the University of Cambridge. This trip is designed to inspire and inform, giving students a first-hand look at one of the world's leading universities. They will gain insight into university life, academic pathways, and the rich traditions of higher education. It's an excellent chance to raise aspirations and support students in thinking about their future goals in a supportive and engaging environment.



Warner Bros. Studios The Making of Harry Potter



Experience the magic of filmmaking with a visit to the Warner Bros. Studio Tour – The Making of Harry Potter. This trip combines cultural enrichment with a behind-the-scenes look at one of the most successful film franchises in history.

Located in Leavesden, the studio tour offers a fascinating insight into the creative and technical artistry involved in bringing J.K. Rowling's world to life on screen. From original sets and props to costumes, special effects, and set design, students will gain a deeper appreciation for the many careers and disciplines involved in film and media production.



London Theatre



London's West End is home to some of the most renowned theatrical productions in the world, and this trip allows students to experience the energy, creativity, and professionalism of live theatre in a world-class venue. Whether it's a classic play, a contemporary drama, or a critically acclaimed musical, the experience offers both educational value and personal enjoyment.

This trip enhances students' appreciation of the performing arts and may link directly to A Level English. It also supports wider personal development by encouraging critical thinking, cultural awareness, and independent reflection.



Thorpe Park



This exciting day out offers students the chance to enjoy one of the UK's leading theme parks with friends in a fun, relaxed, and supervised environment.

Located in Surrey, Thorpe Park is home to a wide range of world-class rides and attractions, including roller coasters, water rides, and immersive experiences. Whether students are thrill-seekers or prefer more laid-back entertainment, there's something for everyone to enjoy.



Windsor Castle



Windsor Castle is one of the official residences of His Majesty The King and the oldest inhabited castle in the world. This fascinating trip offers a unique opportunity to explore British history, monarchy, and heritage through a tour of the State Apartments, St George's Chapel, and the castle grounds. The visit encourages cultural awareness, historical curiosity, and a deeper understanding of national identity.



Residential Weekend

We are proud to offer students the opportunity to take part in a residential activity weekend focused on developing key leadership, communication, and teamwork skills in a challenging and supportive environment.

Held at a dedicated outdoor education centre, this weekend experience is designed to push students beyond their comfort zones through a carefully planned programme of adventure-based learning and group challenges. The activities encourage collaboration, strategic thinking, and resilience—essential qualities for success both in sixth form and beyond.

This residential trip plays a valuable role in preparing students for future academic, personal, and professional challenges. It helps build independence, strengthens peer relationships, and fosters a sense of responsibility and initiative.







Please contact Alison Billing if you have any questions
alison.billing@standrewscambridge.co.uk

